

# TOOLBOX TALK

## 35. DIGGING & PLANTING

### What?



- Currently in the UK tree coverage is at 10% in England, 15% in Wales and 19% in Scotland.
- If the UK government wishes to meet its pledge to reach net zero emissions by 2050, it will have to plant 1.5 billion trees.
- In 2018 the UK planted just 13,400 hectares of woodland.
- In 2019/2020, Open Country planted 4,000 trees

### Why?

- Trees create shade and shelter for crops and livestock.
- Thousands of wildlife species depend on trees for food and shelter.
- By absorbing carbon dioxide from the atmosphere, trees help to combat climate change.
- Trees help to improve soils and prevent flooding and erosion.
- Trees enhance green spaces and make people happy.

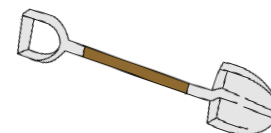


### Do ✓

- ✓ Put a tree guard's flanged end at the top and press the bottom into the ground
- ✓ Be careful of eye injury from canes
- ✓ Wear gloves with a good grip
- ✓ Take regular breaks and rest your back - digging can be strenuous. Work in teams to spread the work evenly
- ✓ Maintain a tidy workplace to ensure no tools are left for people to trip over, or lost in vegetation
- ✓ Count all the tools in and put away safely

### Don't ✗

- ✗ Don't dig right next to where someone is standing - you may cause an injury
- ✗ Don't use the spade with the middle of your foot, use either the tip or heel to prevent injury
- ✗ Don't move or handle heavy objects without following correct procedures



|                       |  |                      |                     |
|-----------------------|--|----------------------|---------------------|
| <b>Document Name</b>  | <i>TBT Digging &amp; Planting</i>            | <b>Document No.</b>  | <i>OC/HS/TBT 35</i> |
| <b>Document Owner</b> | <i>David Shaftoe</i>                         | <b>Date of Issue</b> | <i>07.06.20</i>     |
| <b>Related TBTs</b>   | <i>Manual Handling; Spades &amp; Shovels</i> | <b>Version No.</b>   | <i>1</i>            |